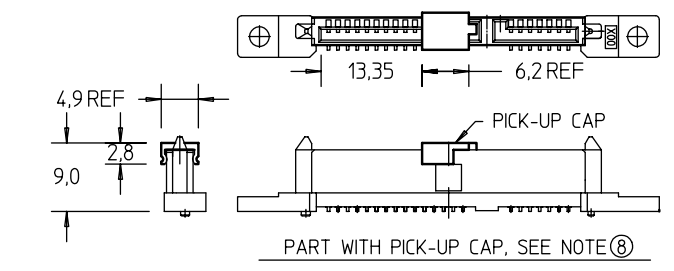
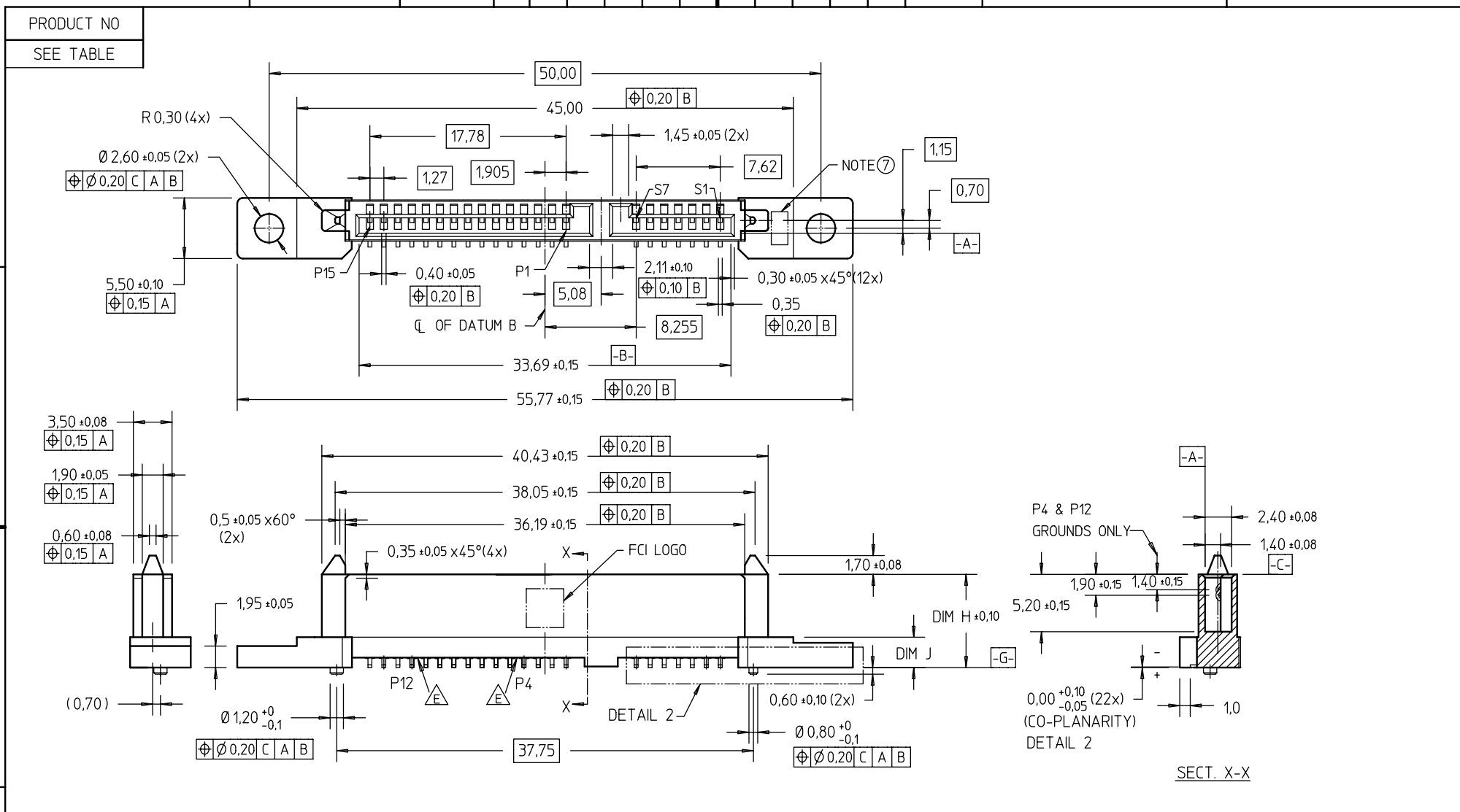


FCI CONFIDENTIAL



This document is the property of and embodies CONFIDENTIAL and PROPRIETARY information of FCI. No part of the information shown on this document may be used in any way or disclosed to others without the written consent of FCI. Copyright FCI.



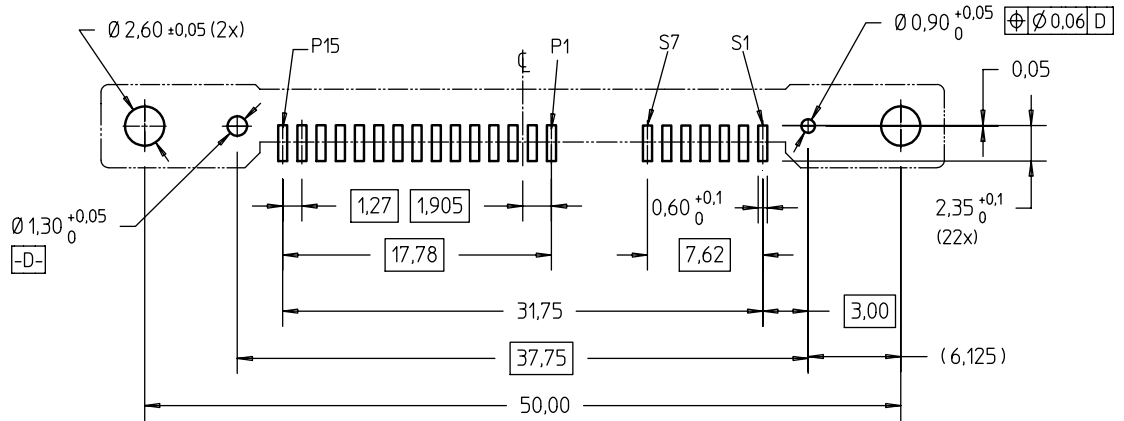
mat'l code		surface ISO 1302		tolerance ISO 406 ISO 1101		projection mm		product family S-ATA	
ltr	ecn no	dr	date	tolerances unless otherwise specified		mm		title	
A	S05-0118	GLL	2005-04-20	angles	linear	= ±0.20	scale 2:1	S-ATA COMB RECEP. VERTICAL SMT TYPE ASSY	
B	S05-0328	GLL	2005-11-02	± 3°				dwg no	
C	S06-0108	GLL	2006-05-25	dr		GL L00	2005-04-20	10045103	
D	S07-0100	GLL	2007-04-09	engr		GL L00	2005-04-20	A4	
E	S07-0339	GLL	2007-10-04	chr		GL L00	2007-10-04	type	
sheet index		revision sheet		E	E	appd		CUSTOMER Drawing	
1		1		1	2	JOEY NG		2007-10-04	

FCI CONFIDENTIAL

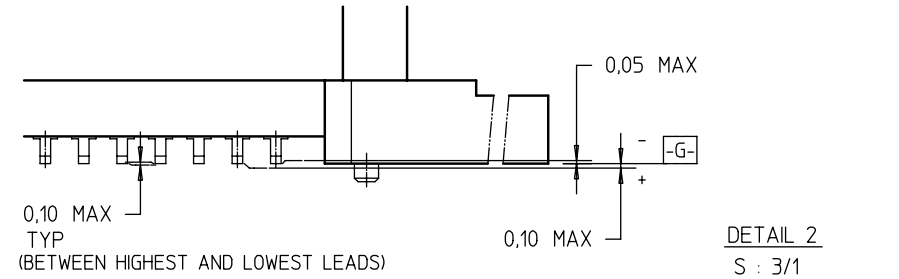


This document is the property of and embodies CONFIDENTIAL and PROPRIETARY information of FCI. No part of the information shown on this document may be used in any way or disclosed to others without the written consent of FCI. Copyright © FCI.

PRODUCT NO	DIM H	DIM J	PICK-UP CAP	PACKAGING
10045103-001LF	8,15	2,45	NO	TRAY
10045103-001CLF			YES	TRAY
10045103-001C-TRLF			YES	TAPE & REEL
10045103-002LF	8,45	2,75	NO	TRAY
10045103-002CLF			YES	TRAY
10045103-002C-TRLF			YES	TAPE & REEL



RECOMMENDED PCB LAYOUT



NOTES:

- 1 THIS PRODUCT MEETS THE SATA SPEC REV. 1.0a
- 2 MATERIAL:
  - 1) HOUSING : HIGH TEMP TERMOPLASTIC, UL 94V-0  
COLOR : BLACK
  - 2) TERMINAL : COPPER ALLOY
  - 3) HOLD DOWN : COPPER ALLOY
- 3 FINISH :
  - 1) TERMINAL : 30u" Au PLATING (CONTACT POINT) OVER  
50u" NICKEL
  - 2) SOLDER TAIL : 100u" min Sn OVER 50u" NICKEL
  - 3) HOLD DOWN : 100u" min Sn OVER 50u" NICKEL
- 4 THE HOUSING WILL WITHSTAND EXPOSURE TO 260°C PEAK TEMPERATURE FOR 10 SECONDS IN A CONVECTION, INFRA-RED OR VAPOR PHASE REFLOW OVEN.
- 5 THIS PRODUCT MEETS EUROPEAN UNION DIRECTIVES AND OTHER COUNTRY REGULATIONS AS DESCRIBED IN GS-22-008.
- 6 THE STD PACKAGING IS IN TRAY UNLESS OTHERWISE SPECIFIED.
- 7 IDENTIFICATION NUMBER FOR CONNECTOR HOUSING.
- 8 PART WITH PICKUP CAP, P/N XXXXXXXX-XXXC\_LF
- 9 FOR TAPE & REEL PACKAGING, SUFFIX \*-TR\* ADDED.  
P/N XXXXXXXX-XXXC-TR\_LF
- 10 A  $\Delta$  SYMBOL WILL BE NEXT TO ANY DIMENSION, VIEW, OR NOTE WHICH HAS BEEN MODIFIED WITH THE CURRENT DRAWING REVISION.

mat'l code		surface <input checked="" type="checkbox"/> ISO 1302	tolerance <input checked="" type="checkbox"/> ISO 406 ISO 1101	projection	product family	S-ATA	
ltr	ecn no	dr	date	title		S-ATA COMB RECEP. VERTICAL SMT TYPE ASSY	
E				angles	linear	= ±0,20	
				± 3°		scale 2 : 1	
		dr	GL L00	2005-04-20		dwg no	sheet 2 of 2 size
		enr	GL L00	2005-04-20		10045103	A4
		chr	GL L00	2007-10-04			
		appd	JOEY NG	2007-10-04			
sheet index	revision sheet	1			type	CUSTOMER	Drawing